

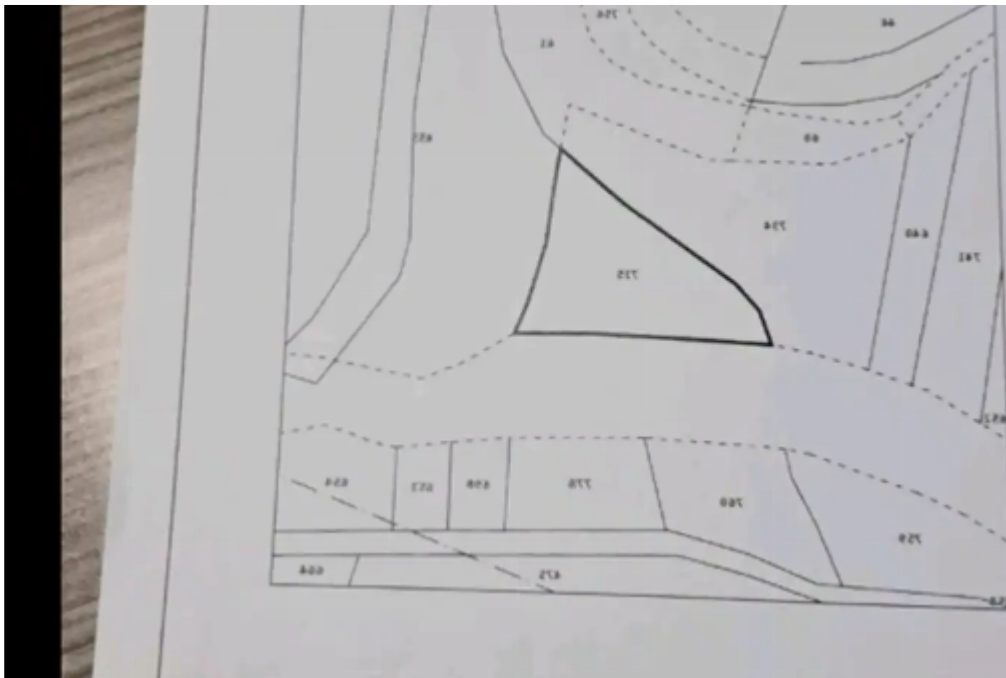
Residential land 733 m²

Limassol, Mandria-4778 , Cyprus

Offered at: € 170,000

Estate ID: 369

Ref: ba5424126





Total plot's-land's area: **733 m²**



Coverage: **50 %**



Density: **90 %**



Available from: **2025-04-17**



Offered at: **170,000**



Type: **Residential**

For Sale: Residential Plot in Mandria – 733 m²? Limassol District, Mandria (Troodos Villages) | Postal Code: 4778Key Features:Plot size: 733 m²Building density: 90%Coverage: 50%Title deed: Not availableLocated directly on the main Kato Platres – Platres roadDescription: A well-positioned residential plot of 733 m² available for sale in Mandria village, nestled in the scenic Troodos region. With a high building density of 90%, the plot offers strong development potential. Situated along the main road connecting Kato Platres and Platres, it is ideal for a countryside residence or investment property with easy access to the mountains and surrounding villages....

Estate on map:



