



## Residential land 1135 m<sup>2</sup>

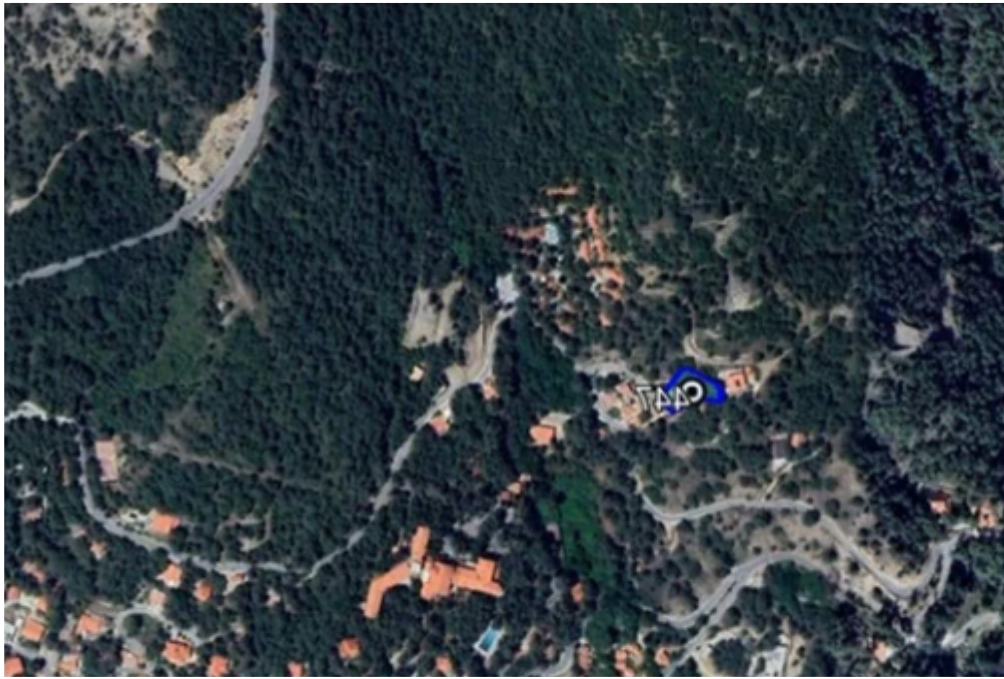
Limassol, Pano-Platres-4820 , Cyprus

**Offered at:** € 295,000

**Estate ID:** 246

**Ref:** ba5538449







Total plot's-land's area: **1135 m²**



Coverage: **35 %**



Density: **60 %**



Available from: **2025-04-15**



Offered at: **295,000**



Type: **Residential**

For Sale: Unique Residential Plot with High Building Density – Pano Platres, Limassol District ? Limassol, Pano Platres | Postal Code: 4820Main Features: • Plot size: 1,135 m² • Building Density: 60% • Coverage: 35% • Buildable area: up to 680 m² • Title: Application for building permit already submitted • Zoning advantage: Old license from 1980 with higher coefficient than usual in the areaKey Advantages: • Suitable for small hotel, boutique retreat, or multiple villas • Elevated location at 1,180 m above sea level • Breathtaking views of the sea, forest, Kaledonia Waterfalls, and Troodos peaks • Direct access from asphalt road • Water and electricity supply ava...

## Estate on map:



